

# Shanklin® Automatic L-Sealers

Shrink Packaging Machinery

Consistent  
Quality,  
Performance,  
and Reliability



# Shanklin<sup>®</sup> Automatic L-Sealer

## OPTIONS AT A GLANCE

By selecting just the right combination of options, you can customize your Shanklin<sup>®</sup> A-Series Automatic L-Sealer for the ultimate performance, efficiency and value!

### INFEED OPTIONS



Adjustable Flight Lug Infeed



72" Product Separating Infeed



Adjustable Flight Bar Infeed

### AVAILABLE OPTIONS

OPTIONS	A-26A	A-27A	A-28A
Adjustable Flight Bar Infeed Conveyor	X	X	
Adjustable Flight Lug Infeed Conveyor	X	X	
Product Separating Infeed Conveyor	X	X	X
Closing Discharge Conveyor	X	X	X
EZ Load Compact Centerfolder	X	X	X
Dual Roll Compact Centerfolder	X	X	X
Dual Infeed Eyes	X	X	X
Print Registration	X	X	X
Casters	X	X	X
EZ Film Thread Infeed Table	X	Standard	
Large Capacity Selvage Winder	X	X	X
Stainless Steel Removable Infeed	X	X	
Custom Options	X	X	X

For more information, please contact your Shanklin<sup>®</sup> distributor.

# Meet the Shanklin® “A” Team

## MODELS A-26A, A-27A, AND A-28A

The Shanklin® A-Series of compact, rugged, and versatile Automatic L-Sealers offers gentle product feed and straight line product flow that make them ideally suited for handling a wide variety of products. A-Series machines feature conveyor-fed automatic operation and are capable of processing up to 35 packages per minute, plus the L-Seal design provides great flexibility and quick product change. Each will accept randomly spaced product, fed either automatically or by hand.

- **Reliable**—Equipped with programmable controllers for simplicity of wiring and ease of troubleshooting; facilitates easy machine set-up and adjustment
- **Flexible**—Photoelectric sensor system automatically compensates for package length change; automatic film advance system allows light, flexible products to be fed through the machine with ease
- **Versatile**—Offers easy product and size changeover and the ability to handle virtually any type of film (depending on sealing system); most features are fully adjustable for maximum convenience
- **Safe**—Electrical controls are UL-listed (for meeting the highest safety standards); sealing area is protected by an electrically interlocked transparent hood through which the sealing process may be safely observed; hood may be easily lifted for full access when necessary
- **Secure**—Password protection capability safeguards sensitive machine functions
- **Easy to use and maintain**—EZ load unwind feature offers easy loading and threading capability; machine controls are located in front for quick and easy access

## STANDARD VALUE-ADDED FEATURES



User Friendly Control Panel



Color Coded Touch Screen



Automatic Film Puller



EZ Load Film Unwind

## THE PERFECT PARTNER

Pair your Shanklin® Automatic L-Sealer with a Shanklin® Shrink Tunnel for superior wraps every time!



# Quality Comes Standard

## MODEL A-26A

The A-26A features adjustable height seal jaws and can automatically wrap a wide range of products, including high profile or short length items, at speeds up to 35 packages per minute. It is also available in a USDA approved model.



## MODEL A-27A

The A-27A possesses all of the same features as the A-26A, but with slightly larger allowances in its maximum seal size, product size, and film width specifications. EZ film threading is standard on the A-27A, which allows operators to move machine components for full access and visibility when threading film. The A-27A is also available in a USDA approved model.



## MODEL A-28A

The large-capacity workhorse model of the A-Series, the A-28A features adjustable height seal jaws specially designed for products too large to fit through the A-26A or A-27A, and is equipped with a heavy duty discharge conveyor to wrap much heavier product than most automatic L-Sealers can handle.

# SHANKLIN® SPECIFICATIONS

## AUTOMATIC L-SEALER MODEL

	Model A-26A	Model A-27A	Model A-28A
Seal Size*	15"W x 21"L	21"W x 33"L	33"W x 43"L
Max. Product Height	• 5.5"	• 7.5" standard • 9.5" with optional 10" height kit	• 9.5" standard • 11.5" with optional 12" height kit
Min. Product Length	• 4" Standard • 1.5" with optional closing conveyor	• 4" Standard • 2.75" with optional closing conveyor	• 7.5" standard • 5" with optional closing conveyor
Max. Product Length**	20"	31"	41"
Conveyor Belt Width	14.5"	17"	30"
Max. Film Width (Folded)	24"	30"	36"
Max. Film Width (Flat)	42" with compact centerfolder		60" with large compact centerfolder
Conveyor Height	Adjustable 31.5" – 37.5" without casters / 35.5" - 41.5" with casters		
Product Speeds***	Up to 35 packages per minute (standard)		25 packages per minute max.
Longitudinal and Transverse Seal	Wide Fin Hot Knife		
Power	230V, 15 Amps, 60 Hz, 1 phase & other voltage options are available		
Compressed Air	0.5 C.F.M. free air at 60 psi		
Safety Devices	<ul style="list-style-type: none"> <li>• Emergency stop button instantly stops all machine functions until manually reset</li> <li>• A transparent hood, interlocked electrically with the automatic sequencing circuit, covers the sealing area; gas cylinders support the hood when it is lifted to allow access</li> <li>• Tamper-resistant controls</li> <li>• Low voltage sensors and actuators</li> <li>• Film clamp proximity sensors ensure safe sealing arm jaw closure</li> <li>• UL Certified electrical chassis</li> </ul>		

\* Width plus height cannot exceed seal jaw width

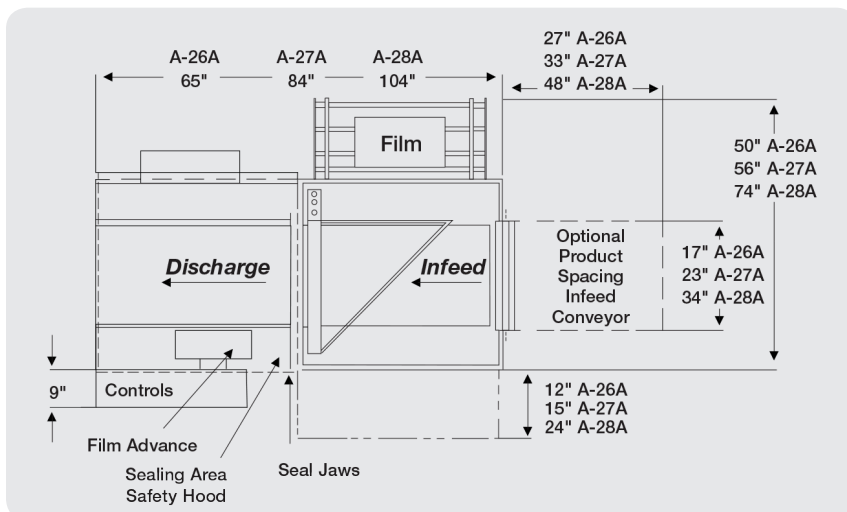
\*\* Length plus height cannot exceed seal jaw length

\*\*\* Dependent on product and application

**USDA APPROVED MODELS AVAILABLE**

® Reg. U.S. Pat. & TM Off.

## A-26A/A-27A/A-28A PLAN VIEW





## A TRADITION OF EXCEPTIONAL CRAFTSMANSHIP

Shanklin's® dedicated force of skilled craftsmen take pride in their ability to produce a truly superior product. Most of the specially manufactured parts that go into Shanklin® machines are produced in our own factory, and our extensive use of computer-controlled equipment ensures maximum quality and consistency at minimum cost.

Shanklin® machines are assembled by highly skilled technical professionals who excel at meeting our exacting specifications. Each machine is then carefully examined, tested and run in a typical application to ensure its optimum operation prior to shipping.

[SealedAir.com](http://SealedAir.com)